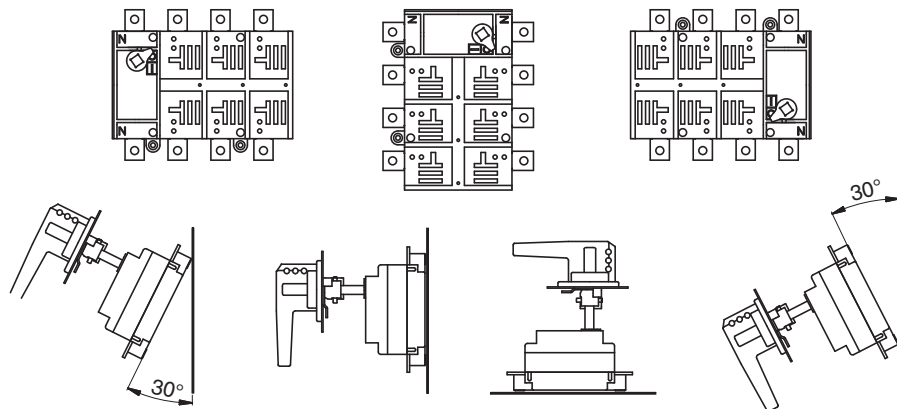


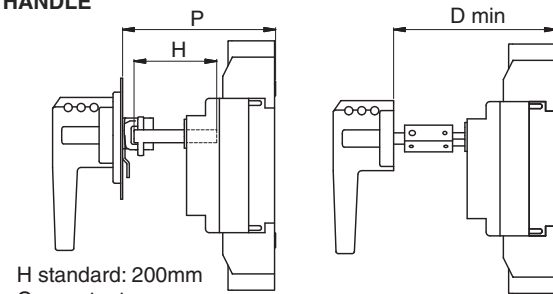
HIGH RATING SWITCH 200÷1600A

INSTALLATION POSITION

For other different positions contact the manufacturer

DOOR INTERLOCK
HANDLE

DIRECT HANDLE



InfoTECH

ITALY

WORLDWIDE

Numero Verde
800-018009

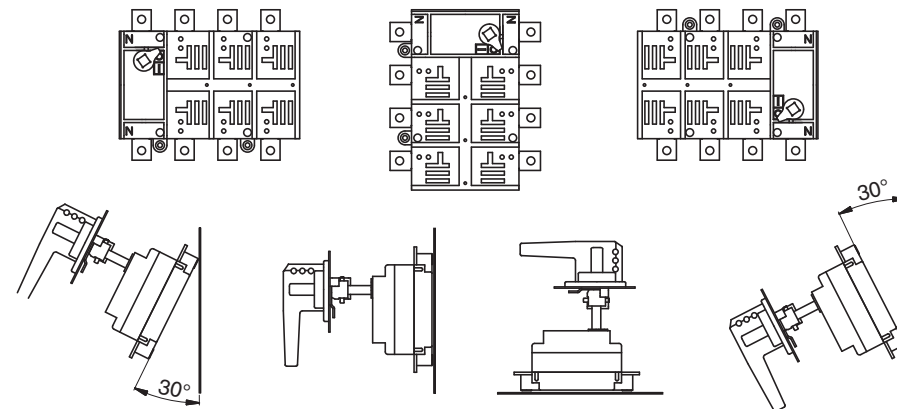
ScameOnLine
www.scame.com
infotech@scame.com

Type	SWITCH DISCONNECTORS						SWITCH DISCONNECTORS FUSES				
	K1 160A	K2 200A 250A	K3 315A 400A 500A	K4 630A	K5 800A 1000A 1250A	K6 1600A	KF1 63A 80A	KF2 100A 125A 160A	KF3 200A 250A	KF4 315A 400A	KF5 630A
Pmin	116	124	148	174	213	252	157.5	165.5	189	215	257
PMax	247	255	261.5	276	306	345	260.5	268.5	280.5	296	320
C	47	55	61.5	76	106	145	60.5	68.5	80.5	96	120
H	P-C	P-C	P-C	P-C	P-C	P-C	P-C	P-C	P-C	P-C	P-C
D min	131	137	178	203	240	287	168	176	219	245	287

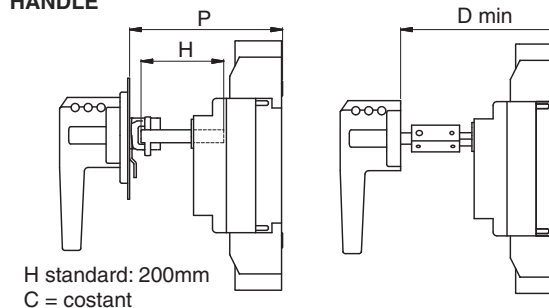
HIGH RATING SWITCH 200÷1600A

INSTALLATION POSITION

For other different positions contact the manufacturer

DOOR INTERLOCK
HANDLE

DIRECT HANDLE



InfoTECH

ITALY

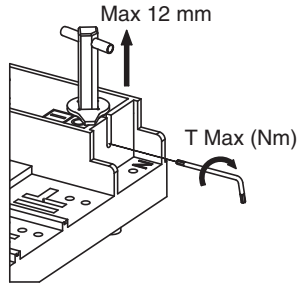
WORLDWIDE

Numero Verde
800-018009

ScameOnLine
www.scame.com
infotech@scame.com

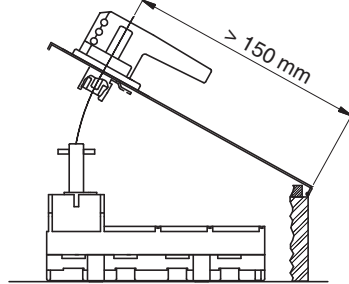
Type	SWITCH DISCONNECTORS						SWITCH DISCONNECTORS FUSES				
	K1 160A	K2 200A 250A	K3 315A 400A 500A	K4 630A	K5 800A 1000A 1250A	K6 1600A	KF1 63A 80A	KF2 100A 125A 160A	KF3 200A 250A	KF4 315A 400A	KF5 630A
Pmin	116	124	148	174	213	252	157.5	165.5	189	215	257
PMax	247	255	261.5	276	306	345	260.5	268.5	280.5	296	320
C	47	55	61.5	76	106	145	60.5	68.5	80.5	96	120
H	P-C	P-C	P-C	P-C	P-C	P-C	P-C	P-C	P-C	P-C	P-C
D min	131	137	178	203	240	287	168	176	219	245	287

ADJUSTING SHAFT

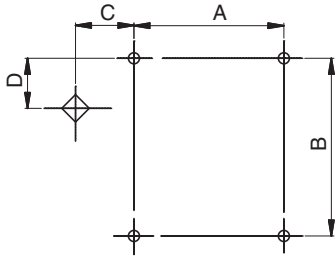


Type	TMax
K1 160A	0.4
K2 200A 250A	0.4
K3 315A 400A 500A	2
K4 630A	2
K5 800A 1000A 1250A	2
K6 1600A	2

PANEL POSITION



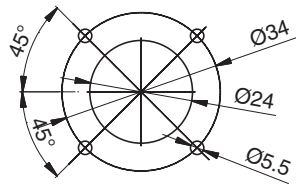
FIXING DRILLING



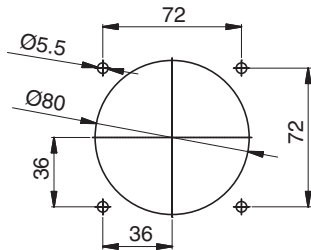
Type	A	B	C	D
K1 160A	66	88	14	23
K2 200A 250A	78	188	14.5	37.5
K3 315A 400A 500A	114	157	21	47
K4 630A	136	180	24	51
K5 800A 1000A 1250A	170	228	29	60
K6 1600A	170	228	29	60

PANEL DRILLING

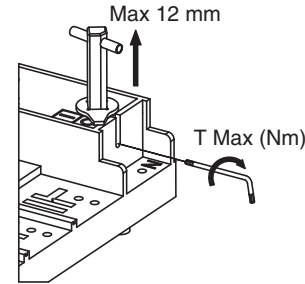
K1 ÷ K5 TYPE



K6 TYPE

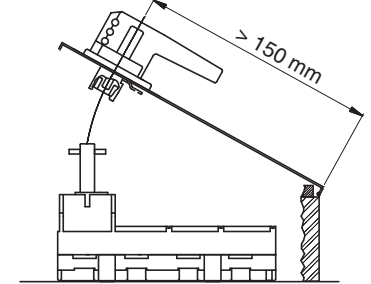


ADJUSTING SHAFT

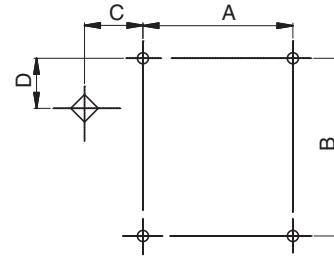


Type	TMax
K1 160A	0.4
K2 200A 250A	0.4
K3 315A 400A 500A	2
K4 630A	2
K5 800A 1000A 1250A	2
K6 1600A	2

PANEL POSITION



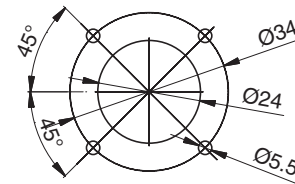
FIXING DRILLING



Type	A	B	C	D
K1 160A	66	88	14	23
K2 200A 250A	78	188	14.5	37.5
K3 315A 400A 500A	114	157	21	47
K4 630A	136	180	24	51
K5 800A 1000A 1250A	170	228	29	60
K6 1600A	170	228	29	60

PANEL DRILLING

K1 ÷ K5 TYPE



K6 TYPE

