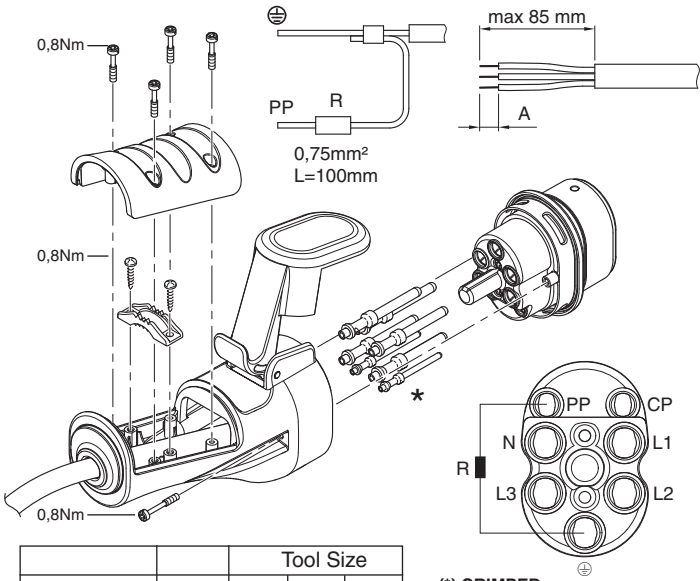


200.33233C2 / 200.33233C4 / 200.33233C6



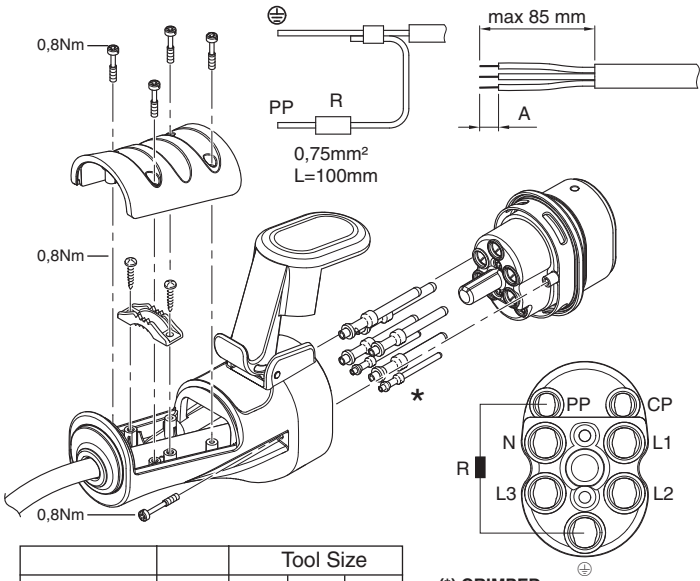
Description	A	Tool Size		
		C2	C4	C6
L1	15mm	2,5	4	6
L2	15mm	2,5	4	6
L3	15mm	2,5	4	6
N	15mm	2,5	4	6
⊕	15mm	2,5	4	6
CP	12mm	0,75	0,75	0,75
PP	12mm	0,75	0,75	0,75

(\*) CRIMPED TERMINALS

Note: insert all terminals even in case of single-phase wiring

In	R ±2%
13A	1,5kΩ 0,5W
20A	680Ω 0,5W
32A	220Ω 0,5W

200.33233C2 / 200.33233C4 / 200.33233C6



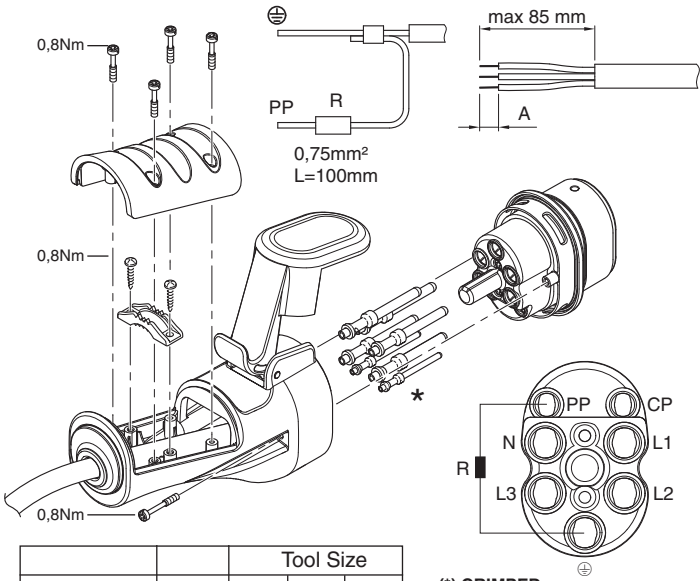
Description	A	Tool Size		
		C2	C4	C6
L1	15mm	2,5	4	6
L2	15mm	2,5	4	6
L3	15mm	2,5	4	6
N	15mm	2,5	4	6
⊕	15mm	2,5	4	6
CP	12mm	0,75	0,75	0,75
PP	12mm	0,75	0,75	0,75

(\*) CRIMPED TERMINALS

Note: insert all terminals even in case of single-phase wiring

In	R ±2%
13A	1,5kΩ 0,5W
20A	680Ω 0,5W
32A	220Ω 0,5W

200.33233C2 / 200.33233C4 / 200.33233C6



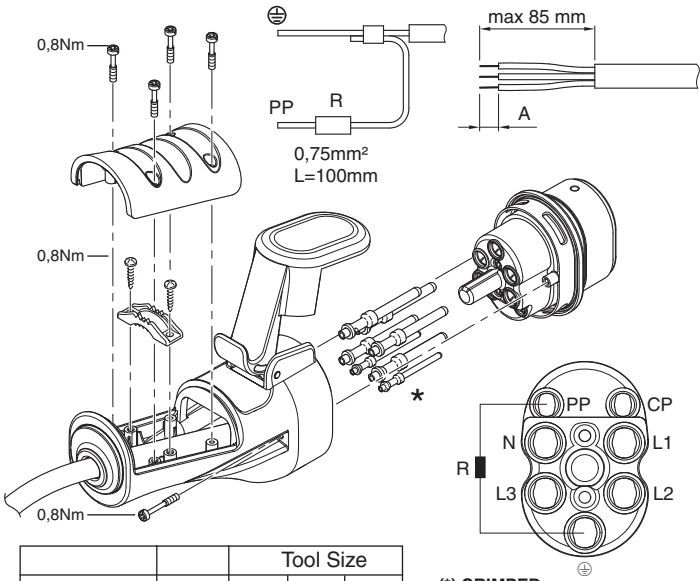
Description	A	Tool Size		
		C2	C4	C6
L1	15mm	2,5	4	6
L2	15mm	2,5	4	6
L3	15mm	2,5	4	6
N	15mm	2,5	4	6
⊕	15mm	2,5	4	6
CP	12mm	0,75	0,75	0,75
PP	12mm	0,75	0,75	0,75

(\*) CRIMPED TERMINALS

Note: insert all terminals even in case of single-phase wiring

In	R ±2%
13A	1,5kΩ 0,5W
20A	680Ω 0,5W
32A	220Ω 0,5W

200.33233C2 / 200.33233C4 / 200.33233C6



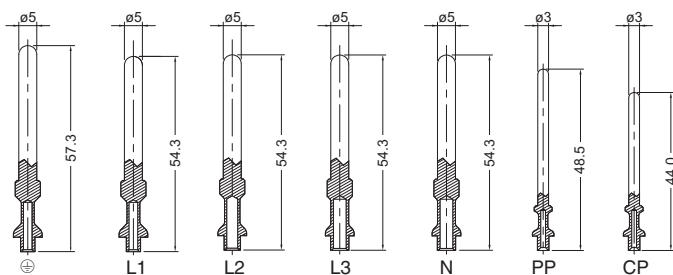
Description	A	Tool Size		
		C2	C4	C6
L1	15mm	2,5	4	6
L2	15mm	2,5	4	6
L3	15mm	2,5	4	6
N	15mm	2,5	4	6
⊕	15mm	2,5	4	6
CP	12mm	0,75	0,75	0,75
PP	12mm	0,75	0,75	0,75

(\*) CRIMPED TERMINALS

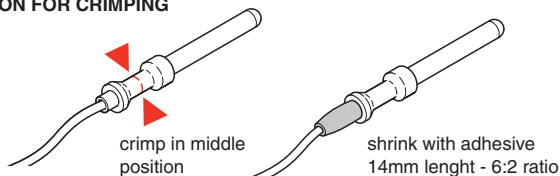
Note: insert all terminals even in case of single-phase wiring

In	R ±2%
13A	1,5kΩ 0,5W
20A	680Ω 0,5W
32A	220Ω 0,5W

## 200.33233C2 / 200.33233C4 / 200.33233C6



## SUGGESTION FOR CRIMPING



## Note:

- For sizes from 0,75 to 2,5:  
Harting clamp 09 99 000 0110
- For size 4,0-6,0: Harting clamp 09 99 000 0303
- Only for flexible conductors

## SUGGESTION FOR CABLE

Type: S05BQ-F or equivalent  
Core insulation:  
EPR-rubber, crosslinked, type EI6  
Outer sheath:  
PUR, type TPU flame-retardant  
Operating temperature:  
-40°C to +90°C

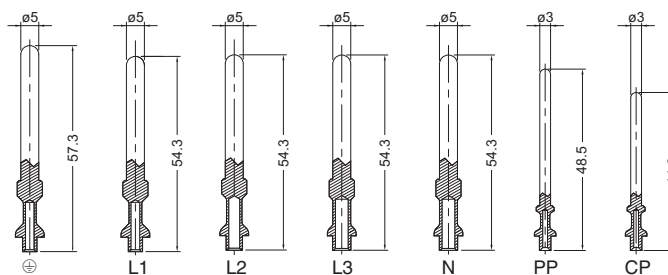
## CABLE SLEEVES CAPABILITY

In	hole diam	cable diam.	
		min	max
Small *	10,5	11,0	13,5
Large	15,5	16,5	18,0

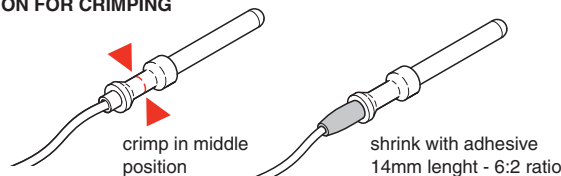
\*Not available for 200.33233C4 and 200.33233C6



## 200.33233C2 / 200.33233C4 / 200.33233C6



## SUGGESTION FOR CRIMPING



## Note:

- For sizes from 0,75 to 2,5:  
Harting clamp 09 99 000 0110
- For size 4,0-6,0: Harting clamp 09 99 000 0303
- Only for flexible conductors

## SUGGESTION FOR CABLE

Type: S05BQ-F or equivalent  
Core insulation:  
EPR-rubber, crosslinked, type EI6  
Outer sheath:  
PUR, type TPU flame-retardant  
Operating temperature:  
-40°C to +90°C

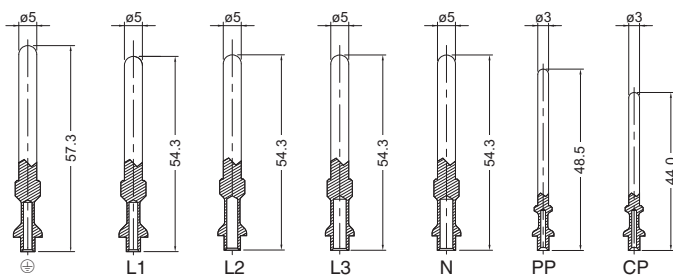
## CABLE SLEEVES CAPABILITY

In	hole diam	cable diam.	
		min	max
Small *	10,5	11,0	13,5
Large	15,5	16,5	18,0

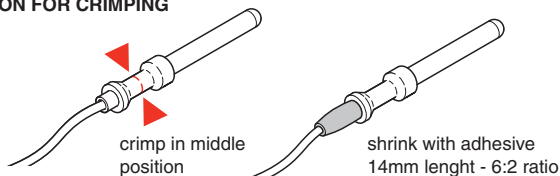
\*Not available for 200.33233C4 and 200.33233C6



## 200.33233C2 / 200.33233C4 / 200.33233C6



## SUGGESTION FOR CRIMPING



## Note:

- For sizes from 0,75 to 2,5:  
Harting clamp 09 99 000 0110
- For size 4,0-6,0: Harting clamp 09 99 000 0303
- Only for flexible conductors

## SUGGESTION FOR CABLE

Type: S05BQ-F or equivalent  
Core insulation:  
EPR-rubber, crosslinked, type EI6  
Outer sheath:  
PUR, type TPU flame-retardant  
Operating temperature:  
-40°C to +90°C

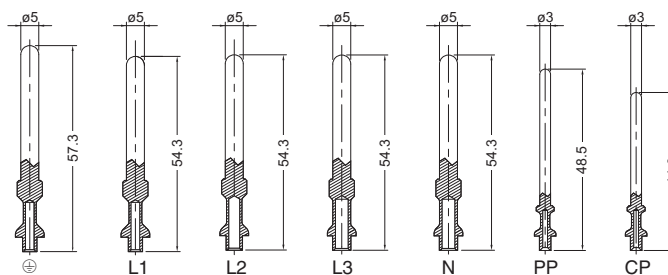
## CABLE SLEEVES CAPABILITY

In	hole diam	cable diam.	
		min	max
Small *	10,5	11,0	13,5
Large	15,5	16,5	18,0

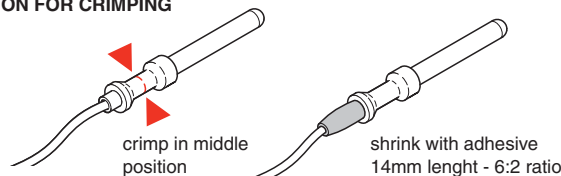
\*Not available for 200.33233C4 and 200.33233C6



## 200.33233C2 / 200.33233C4 / 200.33233C6



## SUGGESTION FOR CRIMPING



## Note:

- For sizes from 0,75 to 2,5:  
Harting clamp 09 99 000 0110
- For size 4,0-6,0: Harting clamp 09 99 000 0303
- Only for flexible conductors

## SUGGESTION FOR CABLE

Type: S05BQ-F or equivalent  
Core insulation:  
EPR-rubber, crosslinked, type EI6  
Outer sheath:  
PUR, type TPU flame-retardant  
Operating temperature:  
-40°C to +90°C

## CABLE SLEEVES CAPABILITY

In	hole diam	cable diam.	
		min	max
Small *	10,5	11,0	13,5
Large	15,5	16,5	18,0

\*Not available for 200.33233C4 and 200.33233C6

